

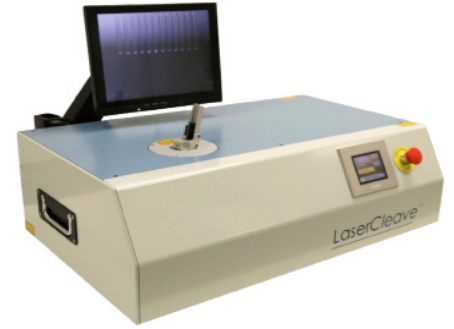
LASERCLEAVE™ - 1500 MXC

Improve performance, increase yield, reduce manufacturing costs

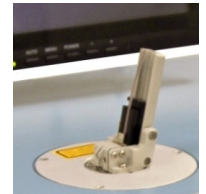
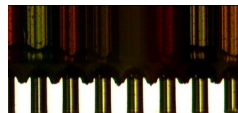
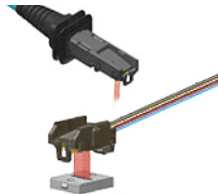
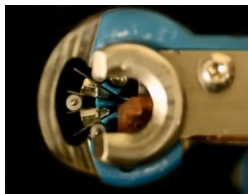
LaserCleave™-1500MXC For the production of PRIZM® MT terminations.

The LaserCleave™-1500MXC is endorsed by US Conec for the preparation of multi-row optical fiber ribbons for use in the PRIZM® MT Terminations.

The LaserCleave™-1500 is a flexible and easy to operate, production ready tool for the preparation of optical fiber ribbons prior to termination. The tool is easily configured for multi row PRIZM® MT manufacture using the dedicated fixture which accepts up to 4, 16 fiber ribbons at a time.



| PERFORMANCE | LASERCLEAVE™ - 1500 MXC |
|-----------------------------|--|
| End face angle (°) | Typically <2 |
| End face ROC (µm) | Typically >200 |
| Fiber flare / mushroom (µm) | <2 increase in end diameter |
| Co-Planarity (µm) | <20 Maximum deviation |
| Enhanced features | Smooth finish, non-contact process |
| Reliability | No core cracks or cleaving back into ferrule |
| Flexibility | Optional adapters for other connector types |
| Ergonomics | User friendly design and operation |
| SPECIFICATION | LASERCLEAVE™ - 1500 MXC |
| Electrical Supply | Single phase, 1.7kVA |
| Cooling | Air cooled; Water cooling option |
| Vision | Integrated viewing cameras |
| Shards | Capacity collection >1M fiber shards |
| Size (WxDxH) | 756 x 505 x 245mm |
| Weight | 35kg |



OPTEK SYSTEMS EUROPE
T +44 1235 539 182
E info@opteksystems.com

OPTEK SYSTEMS NORTH AMERICA
Fiber: T +1 864 272 2640
Micromachining: T +1 978 448 1454
E info@opteksystems.com

OPTEK SYSTEMS ASIA PACIFIC
T +86 769 2302 5011
E info@opteksystems.com

To find out more visit opteksystems.com

25April2022_DS06/1

 **OPTEK SYSTEMS**
A HUMANETICS COMPANY