

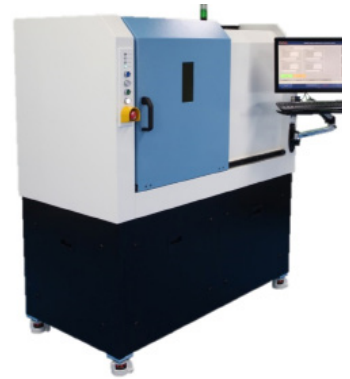
MICROMACHINING TOOL - MM2500 GENERAL

Improve performance, increase yield, reduce manufacturing costs

A compact, industrial, precision laser micromachining platform, designed to accommodate a range of laser types and material handling options.

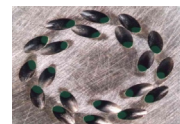
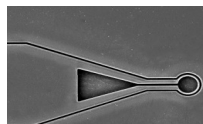
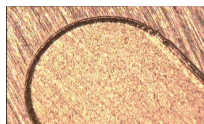
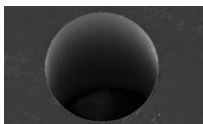
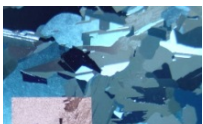
The MM2500 is a fully integrated, stand alone laser tool for a variety of precision laser processing and micromachining applications, from R&D through to full-scale 24/7 manufacturing.

Compatible with a range of laser types and beam delivery options, it provides a convenient workhorse for processing metals, ceramics, polymers, composites and glasses.



FEATURES

- Rugged construction for stable operation
- Sliding “L” door for maximized access to workspace
- Compatible with a range of industrial laser sources
- Intuitive and user friendly interface, can be tailored to your specific needs
- Motion control and optical scanning systems, tailored to specific requirements
- Digital vision system for process control options
- CE Marked and certified
- Software options for process control
- Extract system
- Fully integrated for standalone “turn-key” operation



SPECIFICATIONS	MICROMACHINING TOOL - MM2500 - GENERAL
Electric Supply	20A, 220V±10%, single phase
Extract	HEPA filtered
Size (WxDxH) (mm)	1600x850x950
Weight (kg)	350
Communications	PC remote control via internet

OPTEK SYSTEMS EUROPE
T +44 1235 539 182
E info@opteksystems.com

OPTEK SYSTEMS NORTH AMERICA
Fiber: T +1 864 272 2640
Micromachining: T +1 978 448 1454
E info@opteksystems.com

OPTEK SYSTEMS ASIA PACIFIC
T +86 769 2302 5011
E info@opteksystems.com

To find out more visit opteksystems.com

25April2022_DS09/1

 **OPTEKSYSTEMS**
A HUMANETICS COMPANY